

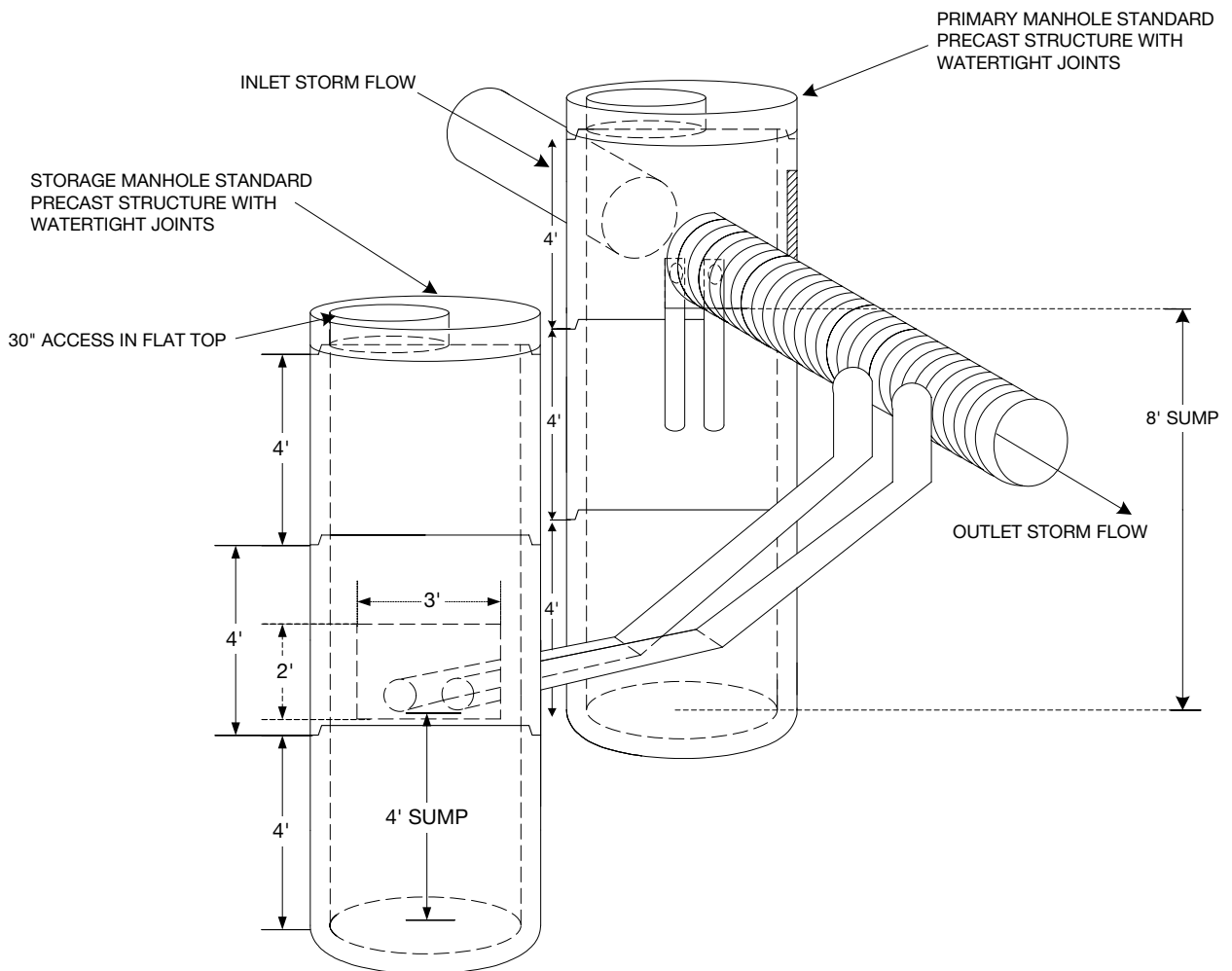
BaySaver® Separation System Isometric View

Item Details

- The BaySaver® Separation System is composed of two standard precast manholes and the BaySaver® Separator Unit. The two manholes allow the removal and storage of pollutants, while the separator unit directs the flow of water to provide the most efficient treatment possible.

⚠ For alternate view, please see top plan view on page 71.

- BaySaver Separator System is exclusively distributed by Shope Concrete Products Company for the Western Washington region.



Note: drawings not to scale